



Homersfield Lake 2024

A family-run business since 1962.

One of the UK's premier specimen lakes, based in Suffolk.



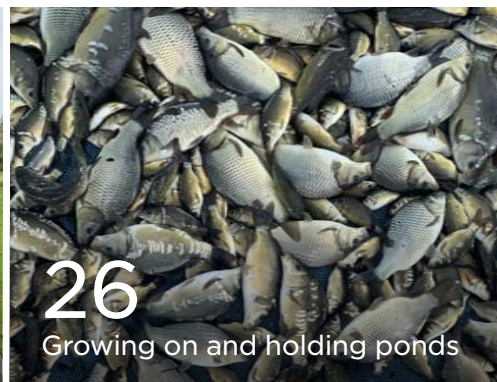
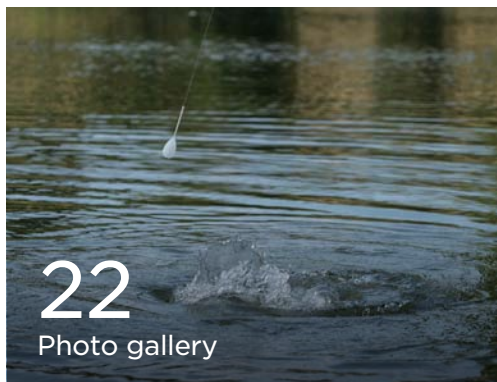
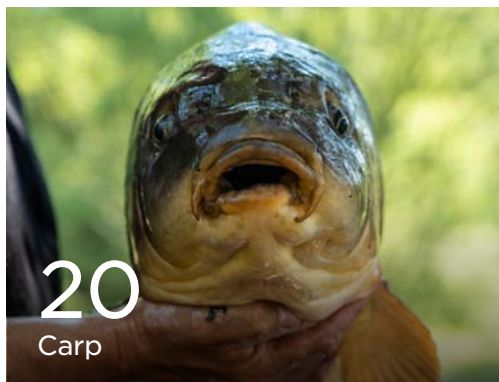
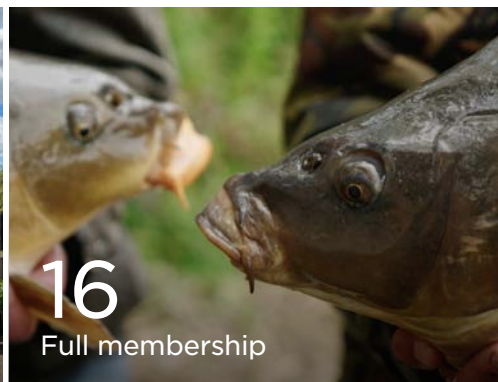
“I think Homersfield is the most beautiful, well manicured, well managed fresh water fishery within the British Isles.”

The late **John Wilson MBE**



Left: Our 35 acre lake is set in 70 acres of landscaped grounds.

Contents



Welcome

Welcome to our 2024 brochure. Every year we try to create a brochure better than the previous year and I hope you enjoy this years as much as we have putting it together.

We are a family run business which started in 1962, so now in our sixty second year of having carp fisheries and carp farms in the UK, I try to maintain the high standards that we started back then. My late father, Norman Symonds, bought six lakes with a few caravans and created the iconic Waveney Valley Lakes Caravan Park (which we sold in 1988). Now in 2024 Homersfield Lake is considered to be one of the best specimen lakes in the UK. What ever time of the year you come here the lake and surrounding area offers something for everyone.

I have to thank my members and all the guests that have stayed at Kingfisher Lodge and Five Islands House for catching great fish during 2023 which can be seen throughout this brochure. Once again specimen angler Phil Spinks of Angling Direct TV has caught numerous fish here and Amanda Hook of Angling Direct TV has taken some stunning pictures as well.



The lake

The lake is a private membership water situated in the picturesque village of Homersfield. It lies on the river Waveney, splitting the counties of Norfolk and Suffolk. The 35-acre lake is set in 70 acres of private landscaped grounds and holds an amazing stock of fish. It's mainly hidden from view and is considered one of the most prolific fisheries in the UK.

It holds mirror and common carp up to 60lbs and a large head of carp ranging from 20lbs to 50lbs. The official British Wels catfish record comes from here with catfish now over 100lbs. There are tench over 13lbs, bream over 15lbs and perch also residing here. It's also famous for its large roach, with over six different fish over 4lbs and numerous 3lb+ fish being caught. It is without doubt one of the best roach fisheries in the UK.

Above: Our 35 acre lake in 70 acres of grounds.

Staying with us

If you're looking to get away, either to fish or enjoy the local area, then consider staying at either of our properties. Both are located here with views over the lake and a great location within the Waveney Valley, close to the coast at Southwold and Norwich city. It's one of the ways that non members can fish here. (Terms and conditions apply when renting either property).

Kingfisher Lodge

Kingfisher Lodge (sleeps four) is very popular with couples and older families. We allow a maximum of two named anglers to fish from two dedicated swims. There is an additional charge for fishing when staying at Kingfisher Lodge. The costs can be found in this brochure.

Five Islands House

From this year bookings for Five Islands (sleeps six) run from Saturday to Saturday. Popular with couples and families especially with younger children, the house has its own hot tub and games room to enjoy with a large enclosed garden.

If you wish to fish the lake the prices for Five Islands House include this for one named guest. If one additional, named guest would like to fish there is a charge for this. Guests are allowed to

fish from any swims around the lake. Prices can be found in this brochure or on our website.

New in 2024: winter bookings

For all winter bookings from 1 January to 25 March in 2024 and from 30 November 2024 to 22 March 2025. If you stay at Kingfisher Lodge or Five Islands House and you would like to fish, then fishing is included at no additional cost for two named anglers during these dates.

While fishing here we ask you to abide by our rules, terms and conditions. These can be found in this brochure or on our website.

Full and winter memberships

Membership for both full and winter members are limited and I do run a waiting list. When applying to join it really helps to give a brief outline of your fishing history.

Fishing days with specimen angler Phil Spinks

I offer bespoke fishing days with Phil, who is known in the UK as one of the top specimen anglers and the main angler for ADTV (Angling Direct). Whether you're looking to become a full or winter member or staying at Kingfisher Lodge or Five Islands House, having a fishing session with Phil is a great way to learn about the lake and for us to get to know you if you're hoping to become a member.

The last year and into 2024

It's been another busy year in 2023, there have been some great fish caught including three fifties and numerous large carp, as well as three Wells Catfish over 100lbs, roach over 3lbs and tench over 10lbs. We launched in August our new website **homersfieldlake.com**. I continue to stock the lake from our growing on ponds and in November 2023 I added one hundred fish between 17 to 24lbs. For 2024 we will be releasing some new films on our YouTube channel. As mentioned 2024 will be our sixty second year having carp fisheries and carp farms, I hope this brochure and our new website encapsulates the lake and passion about everything we have to offer, and look forward to hearing from you, if you wish for any more information about the lake membership, staying here or fish we can supply.

Martin Symonds

Owner, Homersfield Lake





Kingfisher Lodge

The lodge is perfect for couples and families looking for an exclusive and private place to stay.

Set amidst 70 acres of tranquil grounds offering stunning views of the lake. This self-catering lodge, which sleeps four, has been totally re-styled to a very high specification. The kitchen is modern and fully equipped, the conservatory, dining room and lounge offer fantastic views. There are two double bedrooms. The master bedroom has its own en-suite with a further bathroom in the lodge.

You have the opportunity to walk around the lake enjoying the fantastic setting and wildlife, within the private grounds.

Fishing while staying at Kingfisher Lodge allows a maximum of two named people to fish from two designated swims (rules and conditions apply).

For anyone fishing we supply landing nets, weigh slings and unhooking mats. The welfare of the fish is the number one priority. For a full list of rules and conditions see our website.

Whether you wish to rent Kingfisher Lodge for fishing, walking, bird watching or a cycling holiday, this property is a perfect place to relax and stay, not just for exploring the Waveney Valley but also all that our region in East Anglia has to offer.

For more information or if you are interested in booking then please get in touch or check our availability on our website at homersfieldlake.com

Important information

Lake closure

The lake is closed for fishing from 18th May to 17th June 2024 to allow fish to spawn. Guests will NOT be able to fish throughout this period. Guests are free to stay with us and access the lake for all other purposes during these dates.

No fishing groups

We do not allow fishing groups to stay at the lodge.

No pets

We do not allow pets to stay at the lodge.

Reviews



“Stunning location and superb accommodation. The lodge has everything you need to make your stay relaxed and comfortable, and for the angler the lake has the potential to make your dreams come true.

Brian Skoyles October 2023

“We have just had our second, very enjoyable, holiday at Homersfield Lake. It’s a perfect slice of heaven, set in very peaceful grounds and the view of the lake from the Lodge is stunning. The walks around the lake are very picturesque. The lodge is well stocked with everything you could need and is so comfortable and cosy and I loved the sun lounge. This is an absolute gem of a place, we will definitely be coming back every year.”

Zena Bartlett September 2023





Kingfisher Lodge includes:

Open plan room with sitting/dining room with comfortable seating, including a flat screen TV with video and DVD player.

CD player, table and four chairs and electric living flame fire.

Conservatory with comfortable seating and incredible views.

Kitchen with gas hob and oven, fridge/freezer, microwave, dishwasher, washing machine and tumble dryer.

Bedroom one with double bed and en-suite shower room with shower cubicle, washbasin and WC.

Bedroom two with a double bed.

Bathroom with bath, over-bath shower, washbasin and WC.

Garden includes a private patio with table and chairs and access to the lake and grounds.

Driveway for two vehicles.

Gas central heating as well as electric convector heaters.

Also provided: towels, books, DVDs, board games and Wi-Fi.

Opposite:
Kingfisher
Lodge is
furnished to a
high standard.

Left: Aerial view
of Kingfisher
Lodge.



Kingfisher Lodge price list

Prices shown below are based on one week's stay for up to four named guests. Fishing is an extra cost - terms and conditions apply. **Check-in time is 4:00pm, check-out time is 10:00am.**

Weekly prices Saturday to Saturday for 2024/25

6 January - 2 March	£715pw
2 March - 6 April	£825pw
6 April - 8 June	£935pw
8 June - 13 July	£950pw
13 July - 5 October	£1,045pw
5 October - 26 October	£935pw
26 October - 16 November	£825pw
16 November - 14 December	£715pw

Fishing price list

Prices are shown per day. The two designated swims are shown above.

Fishing while staying at Kingfisher Lodge is limited to two named people.

01 January 2024 – 25 March 2024

Fishing included

25 March 2024 – 29 November 2024

1 Rod 12 hrs	£7.50
1 Rod 24 hrs	£15
2 Rods (max) 12 hrs	£15
2 Rods (max) 24 hrs	£30

30 November 2024 – 22 March 2025

Fishing included

New in 2024: winter bookings

Fishing included on all bookings

For weekly, winter bookings (see dates below) fishing is included at no additional cost for two named anglers.

The winter seasons run from 1 January to 25 March in 2024 and from 30 November 2024 to 22 March 2025.

Guests fishing the lake at any time of the year must please abide by our fishing rules, terms and conditions. These can be found on our website.







Five Islands House

Five Islands House was our old family home, which has now been refurbished to a very high and comfortable standard and can accommodate six people.

The house is perfect for couples and families of all ages. It also allows us to offer the house to families with children as the garden is fully fenced off, with beautiful views over Homersfield Lake. There is also a hot tub and games room to enjoy during your stay!

Whether you wish to stay at Five Islands House for fishing, walking, bird watching or cycling, this property is a perfect place to relax. It's ideal for exploring the Waveney Valley and all that our region in East Anglia has to offer. Bookings run from Saturday to Saturday.

If you wish to fish the lake the prices for Five Islands House include this for one named guest. If one additional, named guest would like to fish there is a charge for this. Guests are allowed to fish from any swims around the lake. Prices can be found in this brochure or on our website. While fishing here we ask you to abide by our rules, terms and conditions.

Homersfield village

The house is located in walking distance to the river Waveney and the local pub. There are several restaurants and cafés located in nearby Bungay and Harleston.

Important information

Lake closure

The lake is closed for fishing from 18th May to 17th June 2024 to allow fish to spawn. Guests will NOT be able to fish throughout this period. Guests are free to stay with us and access the lake for all other purposes during these dates.

No fishing groups

We do not allow fishing groups to stay at the house.

No pets

We do not allow pets to stay at the house.

Reviews



Five Islands is a lovely house! A real home from home with such attention to detail and a really warm welcome from the hosts, Lara and Martin. A welcome hamper with a choice of a freshly baked cake too! Fishing Homersfield Lake was a privilege and some fantastic fish including a PB of 46.09lb were landed. A great experience!

Laura Eagle August 2023

From the moment we arrived we were delighted with the accommodation and were warmly welcomed by the hosts. The house is extremely comfortable and clean. The picturesque view of the lake from the back of the house is really quite something special. The back garden is spacious with plenty of room to relax and enjoy the hot tub. I would definitely stay here again!

Chanice Alcock October 2023





Five Islands House includes:

Lounge with comfortable seating, including a flat screen TV with DVD player. Patio doors opening out into the garden. Open fireplace.

Dining room with table and chairs.

Kitchen fully equipped with hob and oven, fridge/freezer and microwave.

Utility room with washing machine.

Bedroom one with a double bed and a TV.

Bedroom two with a double bed and a TV.

Bedroom three with a bunk bed (two beds).

Bathroom with bath, over-bath shower, washbasin and WC.

Downstairs toilet room.

Large front garden.

Games room.

Hot tub.

Garden includes a private patio with table and chairs, fully fenced with views over the lake.

Gas central heating.

Also provided: sheets and towels.

Private parking for three vehicles.

Free Wi-Fi available.



Five Islands price list

Prices shown allow up to six named guests to stay at the house. If you wish to fish, fishing is included for one named guest. If a second named guest would like to fish there is an extra charge. See prices opposite. **Check-in time is 4:00pm, check-out time is 10:00am.**

Weekly prices Saturday to Saturday for 2024/25

6 January - 2 March	£950pw
2 March - 18 May	£1,150pw
18 May - 15 June (no fishing)	£1,000pw
15 June - 07 September	£1,400pw
07 September - 26 October	£1,250pw
26 October - 21 December	£1,150pw

Fishing price list

Prices are shown per day. Named guests can fish from any swim on the lake. If you wish to fish while staying at Five Islands House fishing is included for one named guest. A second named guest can fish for the prices listed below.

01 January 2024 - 25 March 2024

Fishing included for two named guests

25 March 2024 - 29 November 2024

1 Rod 12 hrs	£7.50
1 Rod 24 hrs	£15
2 Rods (max) 12 hrs	£15
2 Rods (max) 24 hrs	£30

30 November 2024 - 22 March 2025

Fishing included for two named guests

New in 2024: winter bookings

Fishing included on all bookings

For weekly, winter bookings (see dates below) fishing is included at no additional cost for two named anglers.

The winter seasons run from 1 January to 25 March in 2024 and from 30 November 2024 to 22 March 2025.

Guests fishing the lake at any time of the year must please abide by our fishing rules, terms and conditions. These can be found on our website.







Full memberships

The lake has been owned by my family since 1978. Since then it has become known as one of the most prolific specimen fishing lakes in the UK. It holds mirror and common carp up to 60lbs, roach over 4lbs, Wels catfish over 100lbs, tench over 13lbs, bream over 15lbs and perch over 3lbs.

Full membership

Full membership is very exclusive and limited, and fortunately our membership is always full.

For 2024 this years membership will run from April 1st 2024 until March 31st 2025 at a cost of £1,200.

The lake is closed for fishing from 18th May until 17th June 2024 to allow the fish to spawn.

If you are interested in joining our waiting list, its very helpful for you to provide us

with some background information on your fishing history and experiences, this helps us when offering memberships.

Potential new members would be invited to meet me here to be shown around before a final decision is made to offer any new memberships.

Non-members

The only way non-members can fish here is by renting Kingfisher Lodge or Five Islands House (fishing rules, terms and conditions apply). One of the best ways for us to offer new memberships is by having a day's fishing with Phil Spinks. This is a great way for us to get to know you and for you to experience fishing the lake.

If you would like to apply for membership please email us on info@homersfieldlake.com with all of your relevant details.

“It’s like the Jurassic Park of fishing... everything grows big”

Phil Spinks

Specimen angler, ADTV



Left: fish caught by our members during 2022 and 2023.



Winter memberships

The lake has become synonymous with excellent carp and roach fishing during the winter months, which led us to start the winter membership.

During the year we look for anglers who would like a winter membership. Potential new winter members would be invited to meet me here to be shown around before a final decision is made to offer any new winter memberships.

Winter members would be given priority to apply for a full membership, if one becomes available and at our discretion. There are a limited number of places available and if you would like to apply

and be added to our waiting list, please email us at info@homersfieldlake.com.

Winter membership runs from 1st November to 31st March the following year and costs £600 (2024-2025).

Non-members

The only way non-members can fish the lake is by renting Kingfisher Lodge or Five Islands House (fishing rules, terms and conditions apply). One of the best ways for us to offer new winter memberships is by having a day's fishing with Phil Spinks. This is a great way for us to get to know you and for you to experience fishing the lake.

Left: members caught from the 2023 winter season, including a 52lb common, caught late November (bottom).





Carp fishing

Homersfield Lake has its part in carp fishing history. The lake was developed out of us as a family having started Waveney Valley Lakes from 1962, which is recognised as the place that the modern day carp angler and the blueprint for future carp fisheries started. When we started the lake here, we knew we could carry everything we had done at Waveney and at our fishery and carp farm at Fishers Green in Essex and create something special. Since 1978 the lake has created records for many anglers over the years and will hopefully continue to do so.

There is a huge head of carp (we estimate 700+ fish), ranging from 10lbs to 60lbs.



The lake record is currently 57lbs and we look forward to our first 60lb fish in the near future.

The vast majority of the carp in the lake have been bred and grown on within the water. It's very pleasing to know that all our 40lb+ fish, now up to nearly 60lbs, have all started by being bred in the lake.

Although we have a natural head of young carp coming on we also like to occasionally introduce carp that have been grown on in the holding ponds we have here. In November 2023 we introduced 100 mixed mirrors and commons between 17lbs and 24lbs back into the lake.

Left: introducing 100 fish from 17lbs to 24lbs in November 2023

Carp history

Back in 1980 we initially stocked the lake with 3,000 carp from our fish farm in Essex, ranging from 3lbs to 36lbs.



Above: Angler's Mail featured Homersfield Lake in 1980.





Roach fishing

The lake is looked upon as one of the, if not the, best roach fisheries in the UK. Phil Spinks made angling history back in 2017 by catching SIX 3lbs+ roach in one session. In the same year a 4lbs 3oz Roach was also caught. It regularly

produces numerous roach over 2lbs and 3lbs. Over the years the lake has produced six fish over 4lbs, that we know of. This is why the Angling Times have described it as “The greatest Roach venue in the land”.

“The greatest roach venue in the land.”

Angling Times

Wels catfish, tench and bream fishing

Apart from the lake being well known for its carp and roach fishing it also produces large Wels catfish over 100lbs. In 2023, three different Wels

catfish were caught over 100lbs. The lake also holds tench over 13lbs and bream over 15lbs. It really is an all round specimen lake.



“As a match angler I’m used to catching some big nets of roach and nothing really phases me, but the roach fishing at Homersfield is something special. Having never caught a 2lb roach in the UK after three visits I’ve had a 2lb 6oz and a 2lb 7oz, plus close to a 100lb catch in a match. I’ll look forward to the day when I can perhaps have a pleasure session and target a 3lb fish, now that would be a real achievement for myself.”

Bob Nudd MBE

4x World Coarse Angling Champion





Growing on and holding ponds

As a family we have been breeding carp since 1975 when we built the first commercial carp farm in the UK at our home in Essex called Fishers Green Farm near Waltham Abbey on the River Lea. Back then we produced hundreds of thousands of carp which were supplied to the Thames Valley Water Authority where they supplied our carp all over the UK over the next seven years.

We created our own bloodline of carp at that time crossing mirror carp we had brought in from Belgium with Magoi carp from Japan. This created a fantastic strain

of carp which we still improve and breed with today. The fish we bred back then also were the first carp we stocked into Homersfield Lake in 1980 / 81. Around 3,000 carp ranging from 4lbs to 36lbs were stocked. Now in 2024 the lake holds a huge head of carp. Carp that have been bred in the lake now reach sizes of up to 60lbs.

In 2024

We continue to improve our bloodline and grow on our carp. In November 2023 we introduced 100 mixed mirrors and commons between 17lbs and 24lbs back into the lake.



Far left: in 1973 we imported three tons (180 fish over 30lbs) from Belgium.

Left: part of the 100 17-24lbs introduced into the lake.

Surplus fish for sale

During the season we sometimes are able to offer surplus fish to other fisheries, these can be picked up here or delivery can be arranged and all come with a health certification.

Carp

Our very own bloodline of carp, sizes ranging from 2lbs to 30lbs.

Wels catfish

We always have available Wels from 10lbs to 80lbs.

Roach

During the winter months we can offer roach from 6oz to 1lbs 8oz.

Bream

We can offer bream from 2lbs to 10lbs.





Fishing with Phil Spinks, specimen angler with ADTV

Phil has been a member here for over eight years. He is well known as a top specimen angler around the UK. He can be seen fishing the lake on our YouTube channel Homersfield Lake in our "THE LAKE" series.

Working for Angling Direct he is the main face on ADTV and all their films can be seen on YouTube. The only way non-members can fish here is by firstly renting our Kingfisher Lodge or Five Islands House. Or secondly by having a fishing session with him.

His catches at the lake have made history in the fishing world. In 2017 he had SIX 3lbs+ roach in one session, and in Feb 2020 he had a 4lbs roach (the lake has produced six different 4lbs+ roach in its time). He has had carp to 44lbs and in one session had a 20, 30 and 40lb fish. In August 2020 he had a 99lbs Wels catfish.

In 2021 he had 188 carp. This included two forties, and numerous thirties and twenties.

Many anglers who have joined Phil here have achieved their PB. Whether its for carp, roach, catfish, tench or bream you will certainly have an enjoyable session with one of the best specimen anglers in the UK.

Prices when staying here

If renting Kingfisher Lodge or Five Islands House, fishing for carp, roach, Wels catfish, tench, bream prices start from:

12hr session (includes bait)	£120
24hr session (includes bait)	£180

Non-members prices

If you're a non-member then sessions start from:

12hr session (includes bait)	£150
24hr session (includes bait)	£230

These sessions are highly recommended. He has years of experience catching specimen fish all over Norfolk and Suffolk.

Membership option

We are very fortunate that we have a full membership and due to this we have a waiting list for both full and winter



Left: Phil with three of his six 3lbs+ roach, caught in a single session, making angling history here.

members. I do not charge a waiting list fee but one of the best ways for us to offer new memberships is by you having a day's fishing with Phil. Having a session here is a great way for us to meet you at the lake and discuss the possibility of becoming a member. Plus this will give you a fantastic chance to learn about the lake and get great advice from Phil.



‘The Lake’ series: watch our films

“THE LAKE” series

In 2021 we started filming our “THE LAKE” series of films. So far we have made six films showing how Phil Spinks goes about fishing over the year and at the same time catching some amazing fish.

All our films can be seen on our Homersfield Lake YouTube channel.

Carl and Alex Fishing Adventures

Well known fishing YouTubers Carl and Alex joined us here at the lake in 2021. Carl had previously joined us in Japan in 2019 to make a film about koi carp. It has now had over nine million views on YouTube.

While here in 2021 they made a film called ‘Fishing my dream lake’ and we made a film about them, which can be seen on our YouTube channel.

ADTV (Angling Direct TV)

Angling Direct are the largest retailers of fishing tackle in the UK. They can often be found here making promotional films on new tackle or having their top videographer and photographer Amanda Hook taking promo pictures. Many of the photos in this brochure can be credited to Amanda.

More to come in 2024

We are currently working on new films, including one about our 62 years history starting in 1962 until now, having carp fisheries and carp farms here in the UK.

Left: Our next film will focus on our 62 year history.



More than just fishing

The lake is set in the pretty village of Homersfield and Kingfisher Lodge and Five Islands House are the perfect getaways for couples and families. Kingfisher Lodge is in the grounds overlooking the lake and is perfect for couples. Five Islands House is in its own large private garden, fully fenced next to the owners house and grounds with stunning views over the lake. It's perfect for couples and families and lies within the beautiful Waveney Valley.

It's the ideal location to explore the Waveney Valley countryside and only 18 miles from the Suffolk coastline and 19 miles from Norwich city. The countryside is perfect for walking and cycling with so much history and other pretty villages to explore.



Walking

The area is great for walking enthusiasts, you have the Waveney Valley to discover and so many beautiful walks close by, plus enjoying walking around our lake.

Bird watching

Staying here is a fantastic place to enjoy the bird life, the lake and grounds are home to countless species and if that's not enough there are many places to visit including the renowned RSPB reserve at Minsmere on the coast.

Cycling and canoeing

If you fancy cycling in the area there are miles of quiet county lanes to explore of if you like canoeing or paddle boarding the river Waveney is only 150 metres away where you can set off from and enjoy the river.

Places of interest

Staying here puts you in the heart of Suffolk and Norfolk, close to the coastline at Southwold, the Norfolk Broads, historic places of interest, Norwich city and so much more to enjoy.







Our history since 1962

1960s

1962 The late Norman Symonds bought six lakes with a few caravans on it and had the vision to create what became the iconic Waveney Valley Lakes Caravan Park in Norfolk. This would become a blue print for future carp fisheries in the UK and Europe.

1963-1966 Over these years Norman and Vera Symonds develop the lakes and land.

1967 We had met our long term friends David, Ros and Micheal Everett and started to bring carp in from Belgium to stock the lakes at Waveney Valley Lakes.

1967-1969 We started bringing in tons of carp to stock the lakes at Waveney Valley. From 1967 to 1973 our friends (Everett's) imported around 20 to 30 tons of carp per year, these were varying sizes and supplied them across the UK.



1962



1962



1963-66



1967



1967



1967-69



1967-69



1967-69

1970s

1971 Peter Stacey's two 30lbs+ carp hit the national angling press and made people notice Waveney Valley. We start seeing a new type of angler come fishing just for carp

1972 We buy Fishers Green in Waltham Abbey, Essex with two lakes and a stretch on the River Lea.

1973 We continue bringing big carp from Belgium for Fishers Green and Waveney Valley. By now every lake at Waveney Valley had carp over 30lbs and was continually making the fishing news. On one shipment from Belgium we imported three tons of carp over 30lbs around 190 fish.

1974 The importation of carp from Europe is stopped by the UK authorities.

1974 Anglers from across the UK started coming weekly to Waveney Valley Lakes, including Lenny Middleton, Kevin Maddocks, Rod Hutchinson, Jeremy Wade and many many more... it is considered that the modern day carp angler developed from this period at Waveney Valley Lakes, and our complex helped create the carp fishing industry.

Our late friend John Wilson writes the first piece on Waveney Valley about us, this would start our 44 year friendship with him.

1975 Norman Symonds decided to build at Fishers Green in Essex the first purpose built carp farm.

1976 Martin Symonds catches a 45.12oz mirror carp from Fishers Green but claims it as 42.12oz. It is still the biggest mirror carp caught in the UK at that time.

1977 The carp farm was completed in Essex and the first fish produced in 1978.

1978 We buy Homersfield Lake, which Redlands Aggregate had finished digging in 1977.

1978-80 During this period we were breeding 100,000's of carp at our farm in Essex and with the then Thames Water Authority, these carp were stocked all over the Thames Valley region and also to other water authorities in the UK. It was one of the most prolific times for carp to be stocked around the country.





1973



1973



1974



1974



1978



1973



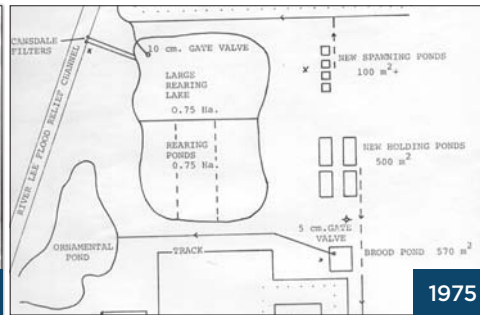
1974



1974



1974



1975



1974



1976



1977



1978-80



1980s

1978-1980 Waveney Valley Lakes - a complex that spawned an industry Waveney Valley Lakes continued its reputation for carp fishing becoming even more popular. Taken from CARPology magazine, the diagram to the left shows how influential the complex became for carp anglers back then.

1980 We take from our carp farm around 3,000 carp to stock into Homersfield Lake ranging from 4lbs to 35lbs.

1980-1981 We buy an over run property with another lake next to Waveney Valley Lakes and this is the start of the development of Yew Tree lake. Yew Tree lake is opened and new stock ponds are built on marsh land.

1981 Martin Symonds visits Japan for the first time, his first importation of koi accidentally includes small Magoi (common carp). This would lead to us cross breeding carp from Belgium and Magoi from Japan, developing our own bloodline of carp from then onwards.

1982 We hold the VERY FIRST carp teach in at Waveney Valley. Top anglers Lenny Middleton, Rod Hutchinson, Clive Diedrich, Malcolm Winkworth and Tim Paisley joined Martin Symonds with six

competition winners from the Anglers Mail. Martin becomes the East Anglia regional organiser for the newly formed Carp Society.

1982 As a family we decide to sell Fishers Green in Essex, it was split into three lots and sold.

1984 Martin Symonds buys a run down trout farm called Tewin Mill near Welwyn in Hertfordshire, it would be developed into one of the UK's biggest water garden centres in the UK also a fish farm was built to grow on carp.

1985 The stock ponds at Yew Tree Lake were made into another lake called Marsh Lake.

1988 We decide to sell Waveney Valley Lakes after 26 years. We keep Yew Tree and Marsh lake and decide to put all our time in creating and making Homersfield Lake what it is today.

1989 Over the next 10 years Martin would have fish facilities in Europe, Israel, Hong Kong, China, USA, Malaysia and Japan.



1984



1985

1990s

1990 We take on a warm water growing on facility in the north of England for growing ornamental fish and carp.

1990's Several of John Wilsons "Go Fishing" TV programs are filmed at Homersfield.

1991 We reopen Yew Tree Fisheries after stocking it with numerous 30lbs+ and 20lbs+ carp. Well known angler Andy Little catches a 40lbs+ winter carp from here.

1993 The official British Wels catfish record is caught at Homersfield (49lbs 12oz) before being disbanded due to illegal imports.

Mid 1990's Homersfield Lake produces its first 50lbs+ common carp.

1995-1999 Martin's centre in Herfordshire is the largest importer of Japanese koi in the UK.





Homersfield Lake in the 1990s



2000s



2010



2017



2000



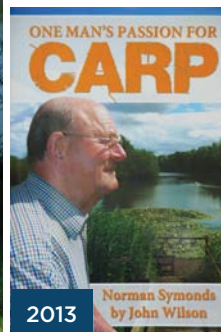
2006



2012



2006



2013



2014



2017

2000 - 2019

2000 Martin sells Tewin Mill in Hertfordshire and moves to Japan to work with the koi breeders in Niigata for 10 years.

2004 We start putting in place the very first otter fencing around the whole complex at Homersfield Lake which was finally finished in 2005.

2006 We build a series of stock ponds at Homersfield so we can breed and rear carp at the lake and continue to improve our bloodline and selection process of our carp.

2006 John Wilson films his carp fishing film here for the Discovery channel.

2010 The lake's first 50lbs+ mirror carp is caught at 51lbs 12oz

2012 We start Kingfisher Lodge for people to stay at the lake and fish.

2013 Norman Symonds biography "One Man's Passion for Carp" is published and written by John Wilson.

2014 Martin writes a series of articles for "Carpology" magazine.

2017 Specimen angler Phil Spinks makes angling history by catching SIX 3lbs+ roach at the lake in one session.

A 4lbs 3oz Roach was also caught by a member. Four different 4lbs+ roach have been caught here.

2018 We make a short promotional film with John Wilson and Phil Spinks about the lake. This sadly was the last time John was here before passing away later in the year in Thailand.

2019 Norman Symonds dies at the age of 94, leaving behind a huge legacy of his carp fisheries and carp farms he had created in the UK.

2019 We start our holiday home Five Islands House allowing families to stay with views over the lake.



2020 - Present day

2021 Started filming “The Lake” series of films following a year at the lake and how Phil Spinks fishes during the year. YouTube sensations Carl and Alex make a film here as do the guys from ‘From the Waters Edge’.

2021 This year started with me meeting up with my old friend Kevin Nash and was invited to do a NASH PODCAST.

2021 We have two charity matches.

2021 I finally got set up and cased a 4lbs 2oz roach that had sadly passed away during the winter of 2021, it looks stunning and I would presume it's the only roach over 4lbs that has been set up.



2021 We constantly are improving our holiday homes here and this year saw us add a hot tub and games room at Five Islands House for our guests to enjoy.

2022-23 I continued to have two charity match fishing events during the year, these were well attended and some great fish were weights were caught and several thousands pounds given for worthy charities that we support as a family.

2023 The lake continues to produce 50lb+ carp, 100lb+ catfish and 3lb+ roach and numerous other big fish. In November we had a winter 52lbs common caught.



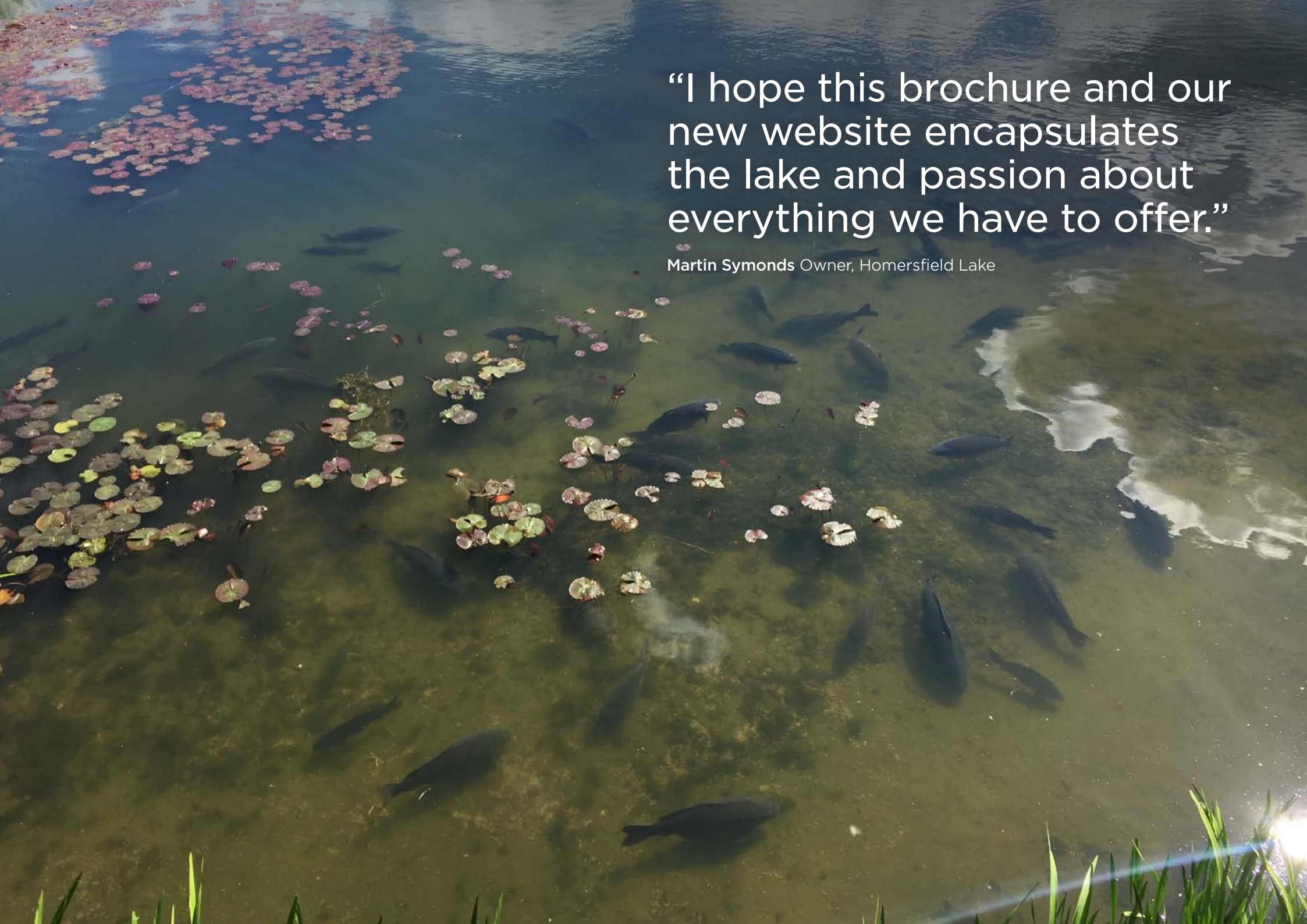
Japan Koi Export & KoiVision TV

I have been supplying koi around the world from Japan since 1981. I lived there for over 10 years and started Japan Koi Export (japankoiexport.com) based in Ojiya, Niigata the birth place of koi.

In 2019 I created Koivision TV: an online subscription programme about Japanese koi and culture. So many anglers also enjoy koi keeping so visit koivision.tv

For over 25 years I have been writing articles about carp fishing and Japanese koi carp. From CARPology to all the leading koi magazines around the world. My book called “Carp to Koi” will cover the last 62 years of our family's history and my life with carp and koi around the world.



A photograph of a pond with many fish and lily pads. The water is clear, and the fish are visible swimming. There are many lily pads of various colors (green, yellow, pink) floating on the surface. The background shows a blue sky and some green grass at the bottom.

“I hope this brochure and our
new website encapsulates
the lake and passion about
everything we have to offer.”

Martin Symonds Owner, Homersfield Lake



“In my opinion Homersfield Lake from an all rounder point of view has to be one of the best lakes in the country, I doubt there is another lake in the country that has such an impressive stock.”

Phil Spinks, specimen angler and lead angler for Angling Direct TV (ADTV).



Phone 01986 788548

Mobile 07900 807272

Email info@homersfieldlake.com

Website homersfieldlake.com

Homersfield Lake

Fishers Green House

Church Lane, Homersfield

Nr. Harleston, Norfolk, IP20 0EU

